



Roundover (5/8")



Bevel



Mission (1/8" Roundover)



Chamfer



Ogee



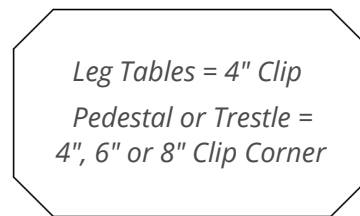
Waterfall

TABLE TOP OPTIONS



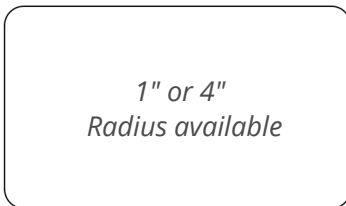
*For Pedestals
or Trestles*

8" SQUARE
ROUND



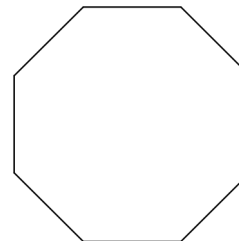
*Leg Tables = 4" Clip
Pedestal or Trestle =
4", 6" or 8" Clip Corner*

CLIPPED
CORNERS



*1" or 4"
Radius available*

RADIUS
CORNER



OCTAGON



*Not Available
on Leg Tables*

OVAL



RECTANGLE

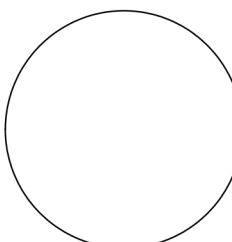


*Not Available
on Leg Tables*

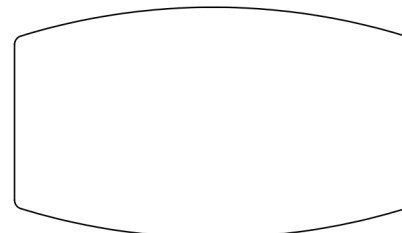
BANQUET



BOW
END



ROUND

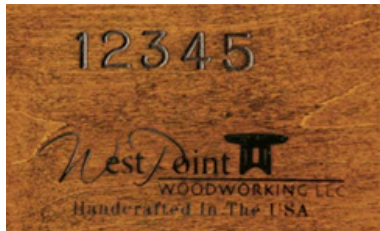


BOAT



Attention to Details

West Point Woodworking pays attention to special details. Quality and details are important to us. Quality standards are established to ensure trouble free service. Each table is made-to-order and our craftsmen will follow your specifications from start to finish.



Each table is assigned a serial number for tracking purposes should any questions or problems arise.



V-grooved corner block assembly and two bolt leg attachments are part of the quality construction of our tables.



Quarter Sawn is created by using a different sawing technique to expose the different grains in the wood bringing out the flakes that remind us of family heirlooms.

Self-storing tables are designed to conveniently store extra leaves. Quality gear slides are used to help you open your table easily.



Butterfly leaf table option.

