

2026 CATALOG



PatioKraft



Bringing outdoor comfort to life.



LONDON COLLECTION (FRONT COVER):

Aluminum Pergola (HSAP): Black
**Sofa (LOS), Lounge (LOL), End Table (LOCFT),
Sofa Swing (LOSSW):** Black

Cushions: Canvas Fern

Pillows: Milano Char and Cove Pebble

INDEX

The PatioKraft Difference	5-7
Hanging Systems Diagrams	7
VIENNA COLLECTION	8-13
LONDON COLLECTION	14-21
BROOKLYN COLLECTION	22-33
HERITAGE COLLECTION	34-41
BELLAIRE COLLECTION	42-45
BENEVA COLLECTION	46-49
Frame Systems	50-55
Accessories	55
Occasionals	56-57
Planters, Benches, Flower Carts, & Wheelbarrows	58-59
Poly Colors	60
Fabric Colors	61
Furniture Covers	62
Warranty & Cleaning	63

BROOKLYN COLLECTION:
Modular Sectional (page 24): Weatherwood
Cushions: Canvas Java
Pillows: Dolce Oasis and Spectrum Indigo



ABOUT US

PROCESS

We are a family run business located in the heart of Northern Indiana's Amish Country. We continually strive for better products using traditional methods and skills handed down from generation to generation.

SERVICE

Here at PatioKraft, we strive to serve you as the customer with exceptional service through each step of the process, from our first contact to after the delivery. We also strive to build the highest quality of products.

CRAFTSMANSHIP

Our drive for quality means constantly striving to get the little things right -- from hidden fasteners to little details that add visual appeal. For you as the customer, PatioKraft means season after season of beautiful, durable furniture, creating an endless enjoyment of the outdoors.



VALUES

Our goal is to humbly bring honor and glory to our creator God in each and every product we build. We hope to be "Bringing Outdoor Comfort to Life."

*Maynard, Esther
and Loren Miller*



THE PATIOKRAFT DIFFERENCE

High quality furniture starts with high quality materials

POLY LUMBER: MADE TO LAST

RECYCLING PROCESS

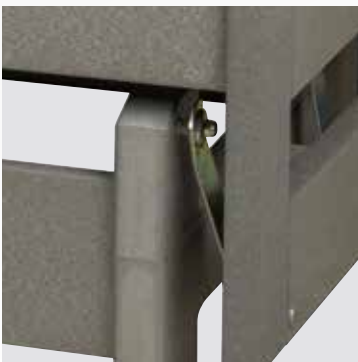


TANGENT™

At PatioKraft, our furniture is built using the highest grade poly lumber from Tangent. Made from 95% recycled polyethylene, this material is the secret to building furniture to outlast the test of time, rain or shine. Go Green!



STAINLESS STEEL HARDWARE: RUST FREE



We use 316 stainless steel fasteners and hardware, keeping your furniture free from unsightly rust stains.

Note: Magnets used are zinc plated since stainless steel is not magnetic. Also, springs are zinc plated since stainless does have not enough strength.



OUR CUSHIONS: BUILT FOR SEASONS OF USE



All cushions and pillows are made with Sunbrella fabrics, the leader in quality and durability in outdoor fabrics. It has an abrasion rating of 15,000-29,000 double rubs. Choose any of the available fabric option colors for your furniture.

We also use **DryFast Foam** for our cushions, the ultimate foam for outdoor use. By not absorbing moisture when exposed to water, this high quality foam is true to its name, creating drier cushions on a daily basis. Under normal conditions, the foam will outlast the fabric.

☑ **FADE
RESISTANT**

☑ **WATER
RESISTANT**

☑ **WEAR
RESISTANT**

☑ **STAIN
RESISTANT**

☑ **EASY
TO CLEAN**

LONDON ARMREST CUSHION | LOAC
BROOKLYN ARMREST CUSHION | BRAC
HERITAGE ARMREST CUSHION | HCAC

- Add to the London, Brooklyn, or Heritage Collection pieces for additional comfort on seating pieces. Straps are custom installed to fit your piece. Not compatible with Tray/Cupholder (TCH).

**DRYFAST
FOAM**



THROW PILLOWS



Our plush square pillows are made with Sunbrella fabrics and filled with polyester fibers for additional softness.

THROW PILLOWS

Decorate your furniture with custom throw pillows, available in any of our selected fabric colors.

18 × 18 PILLOW | P1818

- Pictured with Peyton Granite fabric

14 × 14 PILLOW | P1414

- Pictured with Dolce Oasis fabric

12 × 24 PILLOW | P1224

- Pictured with Cabana Classic fabric

6 × 24 BOLSTER PILLOW | P624B

- Pictured with Maxim Heather Beige fabric

HANGING SYSTEMS: EASY AND SECURE

EASY-HANG SYSTEM

SPRINGS

- Springs add a smoother swing and more glide.
Rated at 1000# per swing.

PULLEYS

- Powder coated black welded aluminum hook and bracket with stainless steel bolt.
- Pulley wheel is color matched to furniture color.

ROPES

- $\frac{3}{4}$ " Polypropylene Rope with welded ends.
- Standard length is cut for 90" ceiling height.
Custom lengths available upon request.

CINCH BRACKETS

- Color matched poly cinch brackets lock seat angles firmly while still allowing for easy adjustment.

**ALL SWING ROPES ARE
PRESET AT OUR FACILITY
TO SIMPLIFY HANGING**

DAYBED BRACKETS

- Powder coated black welded aluminum bracket allows for smooth movement on daybeds. Comes with springs for a relaxing glide.

SWING ROPE KIT | HSSRK

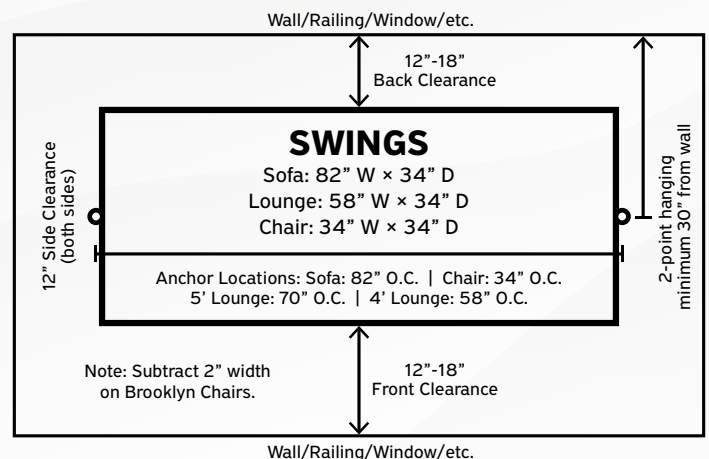
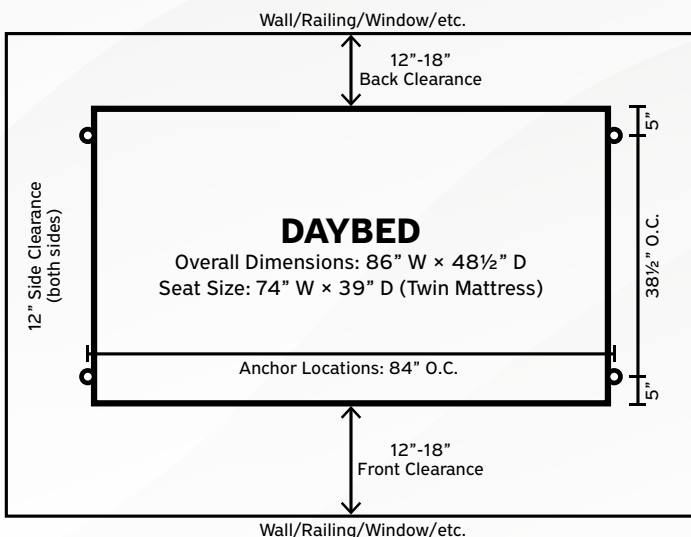
- (2) poly pulleys, (2) cinch brackets, and (2) 180" ropes.

DAYBED ROPE KIT | HSDRK


- (4) daybed brackets and (4) 96" ropes.

HANGING SYSTEMS DIAGRAMS

- Each swing includes hanging and adjustment instructions.
- When ordering swing, provide a ceiling height and we will pre-cut ropes to the correct length.
- If a swing is purchased with one of our frame systems (starting on page 51) , we will pre-cut ropes to the correct length.







VIENNA COLLECTION

Elegant and timeless design,
built for every stage of life!

- Heat formed and bent back slats for ultimate lumbar support.
- Bent-back slat back provides excellent lumbar support and is chiropractor tested and approved.
- Poly glider arms for additional sturdiness/strength.
- Upgraded glider hardware for longer travel and smooth, quiet glide.
- Clean, rounded design (no visible screws or extra parts).
- Glider base is recessed and won't hit your calves.
- Comfortable seating includes a rounded front edge and added middle brace to eliminate sagging.
- For additional accessories, see page 57.

PATIO FURNITURE:

Vienna Collection 5' Lounge Glider w/Console (VE5LGC), Swivel Gliders (VESG), End Tables (VEET):

Brazilian Walnut on Birchwood

Pillows: Berenson Tuxedo

DAYBED:

Pergola (HSAP1212): Black

Curtains (SUNCUR): Bliss Sand

London Daybed (LODB): Weathered Wood

Daybed Cushions: Canvas Coal



VIENNA COLLECTION

Clean classic elements and bent back comfort for every outdoor oasis.



Standard console includes (2) phone holders and (2) drink holders.



5' LOUNGE GLIDER W/CONSOLE

VE5LGC

- Pictured in Dark Gray on Black.
- Size: 66½ W × 32 D × 44 H
- Seat Size: 58 W × 19½ D

VIENNA COLLECTION

Clean classic elements and bent back comfort for every outdoor oasis.



LOUNGE GLIDER | VELG

- Pictured in Brazilian Walnut on Seashell.
- Size: 56½ W × 32 D × 44 H
- Seat Size: 48 W × 19½ D
- Standard with (2) swing-out cupholders.



VIENNA COLLECTION

Clean classic elements and bent back comfort for every outdoor oasis.

STOCK COLORS*



ANTIQUE MAHOGANY
ON BLACK



LIGHT GRAY
ON BLACK



WEATHERED WOOD
ON BLACK



WEATHERED WOOD
ON BROWN

SWIVEL GLIDER | VESG

- Pictured in Antique Mahogany on Black.
- Size: 32 W × 28 D × 45 H
- Seat Size: 23 W × 19½ D
- Standard with E&B heavy duty stainless steel swivel.
- Standard with swing out cup-holder on left arm (right hand when sitting).
- *Stock colors for Vienna Swivel Glider (VESG) and Vienna End Table (VEET) (Shown on page 57). Available for immediate shipment (restrictions apply).

VIENNA COLLECTION

Clean classic elements and bent back comfort for every outdoor oasis.



CHAIR GLIDER | VECG

- Pictured in Natural Teak on Black.
- Size: 32 W × 28 D × 45 H
- Seat Size: 23 W × 19½ D
- Standard with swing out cup-holder on left arm (right hand when sitting).

CHAIR | VEC

- Pictured in Natural Teak on Black.
- Size: 32 W × 28 D × 42½ H
- Seat Size: 23 W × 19½ D
- Standard with swing out cup-holder on left arm (right hand when sitting).





LONDON COLLECTION

Classic meets contemporary. This collection brings elegance and sophistication to any outdoor oasis!

- 4" Cushions for ultimate comfort.
- Classic lines and timeless appearance.
- Built to last with heavy duty design.
- Extra tall backs for added comfort and head support.
- Seat and back cushions have straps to keep them secured to the frame, but also allow for simple removal.
- Swings feature rope and pulley system with exposed knots.
- For additional accessories, see page 56.

LONDON COLLECTION:

Aluminum Pergola (HSAP): Black

Sofa (LOS), Lounge (LOL), Coffee Table (LOCFT),

Sofa Swing (LOSSW): Black

Cushions: Canvas Fern

Pillows: Milano Char and Cove Pebble

LONDON COLLECTION

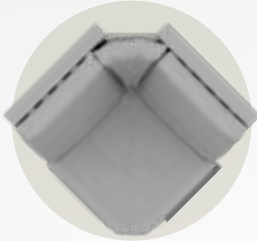


SECTIONAL



- Pictured in White with Canvas Fern cushions.
- Shown with (1) LE Sectional Lounge, (1) Sectional Corner, and (1) RE Sectional Sofa.
- Comes standard with seat & back cushions. Pillows are optional.

This sectional is built for simple installation. Simply latch the ends together using the attached L-brace, then tighten a single hand bolt in the back to secure the two pieces together.



SECTIONAL CORNER | LOSCOR

- Size: 40 W × 40 D × 41 H
- Seat Size: 28 × 28



SECTIONAL CHAIR | LOSEC

LE/RE CHAIR*

- Size: 28 W × 34 D × 41 H
- Seat Size: 22 × 24

EX CHAIR

- Size: 24 W × 34 D × 41 H
- Seat Size: 22 × 24



SECTIONAL LOUNGE | LOSL

LE/RE LOUNGE*

- Size: 52 W × 34 D × 41 H
- Seat Size: 22 × 48

EX LOUNGE

- Size: 48 W × 34 D × 41 H
- Seat Size: 22 × 48



SECTIONAL SOFA | LOSS

LE/RE SOFA*

- Size: 76 W × 34 D × 41 H
- Seat Size: 22 × 72

EX SOFA

- Size: 72 W × 34 D × 41 H
- Seat Size: 22 × 72



Arm Rest Location: LE = Left End | RE = Right End | EX = Extension (no arm rest) *LE Shown

LONDON COLLECTION



SWIVEL GLIDER | *LOSG*

- Pictured in Black with Gateway Mist cushions.
- Size: 30 W × 34 D × 42 H
- Seat Size: 24 W × 22 D
- Standard with E&B heavy duty stainless steel swivel.

GLIDER | *LOCG*

- Pictured in Black with Cabana Classic cushions.
- Size: 30 W × 34 D × 42 H
- Seat Size: 24 W × 22 D

Available with optional arm cushions. See page 6 for more info.

LONDON COLLECTION



SOFA | *LOS*

- Pictured in Brazilian Walnut with Milano Char cushions.
- Size: 81 W × 34 D × 41 H
- Seat Size: 72 W × 22 D
- Comes standard with (3) back cushions and (3) seat cushions.

LONDON COLLECTION



LOUNGE | *LOL*

- Pictured in Brazilian Walnut with Brannon Redwood cushions.
- Size: 57 W × 34 D × 41 H
- Seat Size: 48 W × 22 D
- Comes standard with (2) back cushions and (2) seat cushions.

CHAIR | *LOC*

- Pictured in Seashell with Canvas Java cushions.
- Size: 33 W × 34 D × 41 H
- Seat Size: 24 W × 22 D
- Comes standard with (1) back cushion and (1) seat cushion.

Available with optional arm cushions. See page 6 for more info.

LONDON COLLECTION



SOFA SWING | LOSSW

- Pictured in Antique Mahogany with Canvas Coal cushions.
- Size: 84 W × 34 D × 34 H
- Seat Size: 72 W × 22 D
- Comes standard with (3) back cushions and (3) seat cushions.
- Includes ropes, springs, and (2) pulley brackets for easy hanging. See page 7 for hanging system diagrams.
- Easily adjust the seat angle or keep it locked in place by using the poly bracket.

LOUNGE SWING | LOLSW

- Pictured in Black with Berenson Tuxedo cushions.
- Size: 60 W × 34 D × 34 H
- Seat Size: 48 W × 22 D
- Comes standard with (2) back cushions and (2) seat cushions.
- Includes ropes, springs, and (2) pulley brackets for easy hanging. See page 7 for hanging system diagrams.
- Easily adjust the seat angle or keep it locked in place by using the poly bracket.

LONDON COLLECTION



CHAIR SWING | LOCSW

- Pictured in Dark Gray with Cove Pebble cushions.
- Size: 36 W × 34 D × 34 H
- Seat Size: 24 W × 22 D
- Comes standard with (1) back cushion and (1) seat cushion.
- Includes ropes, springs, and (2) pulley brackets for easy hanging. See page 7 for hanging system diagrams.
- Easily adjust the seat angle or keep it locked in place by using the poly bracket.

DAYBED | LODB

- Pictured in Natural Teak with Canvas Java cushions and optional back cushions.
- Size: 86 W × 48½ D × 34 H
- Seat Size: 74 W × 36 D (equivalent to Twin size bed).
- Includes ropes, springs and (4) brackets for easy hanging. See page 7 for diagrams.
- Comes standard with (3) seat cushions.
- Back cushions are optional (LODBBC).

Available with optional arm cushions. See page 6 for more info.





BROOKLYN COLLECTION

Timeless design, modern appeal.

This collection has a contemporary design, creating an effortless outdoor space.

- Modern design with clean lines and square corners.
- Swings feature a rope and pulley system with hidden knot for clean appearance.
- 3" cushions to deliver optimal comfort while accenting the design. 4" cushions also available.
- Seat & back cushions include straps to keep them secured to the frame.
- Curved back for full back support.
- Higher back creates a built-in headrest.
- Gliders feature ultra smooth hardware for maximum relaxation.
- For additional accessories, see page 56.

BROOKLYN COLLECTION:

**5' Lounge Glider w/Console (BR5LGC),
Chair Glider (BRCG), Coffee Table (BRCT),
End Tables (BRET), and Planters (ABP201):**

Antique Mahogany

Cushions: Canvas Birds Eye

Pillows: Brannon Redwood

BROOKLYN COLLECTION

Your space, your way! Completely modular sectional with superior flexibility.



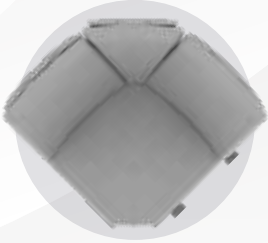
MODULAR SECTIONAL

- Pictured in Coastal Gray with Cove Pebble cushions.
- Shown with (1) LE Rocking Chair, (1) Extension Rocking Chair, (1) Corner Table, (1) Extension Chair, (1) Console, and (1) RE Chair.
- Comes standard with seat & back cushions.

This sectional is built for simple installation. Sections simply nest together using the attached L-brace, giving you the opportunity to reconfigure everything to fit your space best.

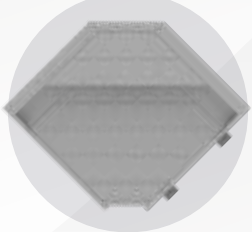


SECTIONAL PIECES



SECTIONAL CORNER | *BRSCOR*

- Size: 41 W × 41 D × 38 H
- Seat Size: 28 W × 28 D



SECTIONAL CORNER TABLE | *BRSCORT*

- Size: 36 W × 36 D × 22½ H
- No seating available on this piece.



SECTIONAL LE/RE END CHAIR | *BRSEC*

- LE Chair Shown
- Size: 28 W × 34 D × 38 H
- Seat Size: 24 W × 21½ D



SECTIONAL EXTENSION CHAIR | *BRSXC*

- Size: 24 W × 34 D × 38 H
- Seat Size: 24 W × 21½ D



SECTIONAL LE/RE END ROCKING CHAIR | *BRSERC*

- LE Chair Shown
- Size: 25 W × 34 D × 38 H
- Seat Size: 24 W × 21½ D



SECTIONAL EXTENSION ROCKING CHAIR | *BRSXRC*

- Size: 25 W × 34 D × 38 H
- Seat Size: 24 W × 21½ D



SECTIONAL CONSOLE | *BRSCCL*

- Size: 13 W × 34 D × 38 H
- Seat Size: 12 W × 21½ D



Arm Rest Location: LE = Left End | RE = Right End

BROOKLYN COLLECTION

Comfortable seating with a contemporary design for your space.



5' LOUNGE W/CONSOLE | BR5LC

- Pictured in Black with Canvas Fern cushions.
- Size: 67 W × 34 D × 40 H
- Seat Size: 60 W × 21½ D
- Includes standard console. See page 32 for additional details.

LOUNGE | BRL

- Pictured in Dark Gray with Stanton Greystone cushions.
- Size: 55 W × 34 D × 40 H
- Seat Size: 48 W × 21½ D

BROOKLYN COLLECTION



SOFA | *BRS*

- Pictured in White with Spectrum Indigo cushions.
- Size: 79 W × 34 D × 40 H
- Seat Size: 72 W × 21½ D



SOFA W/CONSOLE | *BRSC*

- Not pictured. See page 33 for console example.
- Size: 79 W × 34 D × 40 H
- Seat Size: 72 W × 21½ D

CHAIR | *BRC*

- Pictured in Antique Mahogany with Birds Eye cushions.
- Size: 29 W × 34 D × 40 H
- Seat Size: 22 W × 21½ D

Available with optional arm cushions. See page 6 for more info.

BROOKLYN COLLECTION

Ultimate comfort with a contemporary appeal for your outdoor space.

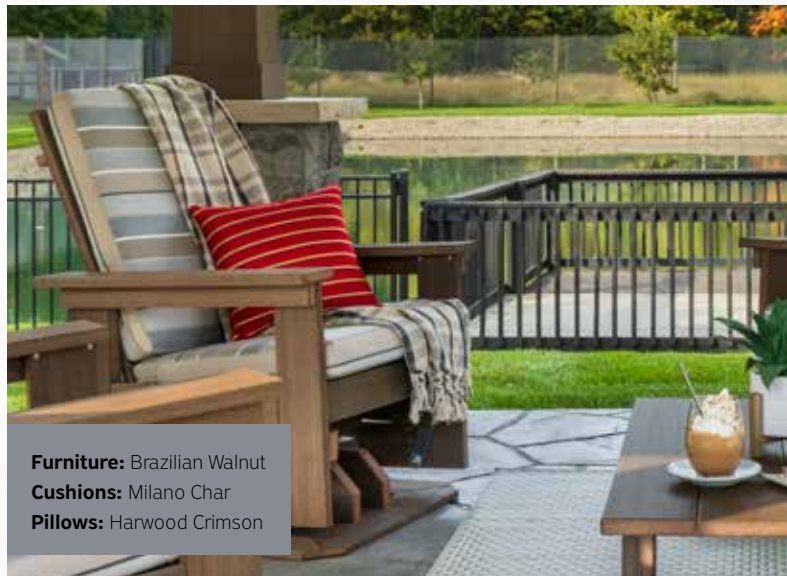


LOUNGE STEP-UP GLIDER | *BRLGST*

- Pictured in Brazilian Walnut with Astoria Sunset cushions.
- Size: 55 W × 34 D × 47 H
- Seat Size: 48 W × 21½ D

LOUNGE GLIDER | *BRLG*

- Not pictured.
- Size: 55 W × 34 D × 40 H
- Seat Size: 48 W × 21½ D



Furniture: Brazilian Walnut
Cushions: Milano Char
Pillows: Harwood Crimson

BROOKLYN COLLECTION



5' LOUNGE GLIDER W/CONSOLE

BR5LGC

- Pictured in Weatherwood with Berenson Tuxedo cushions.
- Size: 67 W × 34 D × 40 H
- Seat Size: 60 W × 21½ D
- Includes standard console. See page 32 for additional details.

5' LOUNGE STEP-UP GLIDER W/CONSOLE | BR5LGCST

- Not pictured.
- Size: 67 W × 34 D × 47 H
- Seat Size: 60 W × 21½ D
- Includes standard console. See page 32 for additional details.

Available with optional arm cushions. See page 6 for more info.

BROOKLYN COLLECTION



ROCKING CHAIR | *BRRC*

- Pictured in Dark Gray with Stanton Graystone cushions.
- Size: 30 W × 34 D × 40 H
- Seat Size: 23 W × 21½ D

SWIVEL GLIDER | *BRSB*

- Pictured in Light Gray with Cove Pebble cushions.
- Size: 29 W × 34 D × 40 H
- Seat Size: 22 W × 21½ D
- 304 stainless steel swivel.
- Optional: E&B heavy duty 316 stainless steel swivel also available (BRSGHD).

CHAIR GLIDER | *BRCG*

- Pictured in Antique Mahogany with Birds Eye cushions.
- Size: 29 W × 34 D × 40 H
- Seat Size: 22 W × 21½ D



BROOKLYN COLLECTION

Stylish and comfortable, our swings are perfect for your porch or your patio when paired with one of our frames (page 52).



CHAIR SWING | *BRCSW*

- Pictured in Antique Mahogany with Birds Eye cushions.
- Size: 33 W × 34 D × 33 H
- Seat Size: 24 W × 21½ D
- Includes ropes, pulleys, and springs for easy hanging. See page 7 for hanging system diagrams.
- Easily adjust the seat angle or keep it locked in place by using the poly bracket.



LOUNGE SWING | *BRLSW*

- Pictured in Dark Gray with Paradigm Stone cushions.
- Size: 59 W × 34 D × 33 H
- Seat Size: 48 W × 21½ D
- Includes ropes, pulleys, and springs for easy hanging. See page 7 for hanging system diagrams.
- Easily adjust the seat angle or keep it locked in place by using the poly bracket.

Available with optional arm cushions. See page 6 for more info.

BROOKLYN COLLECTION



All console pieces include a flip down center console with (2) cup holders.

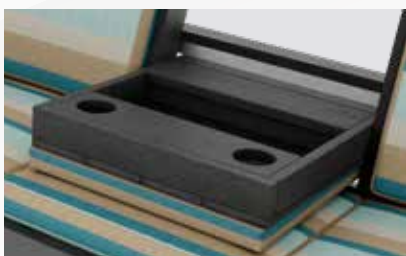
5' LOUNGE SWING W/CONSOLE

BR5LSWC

- Pictured in Antique Mahogany with Birds Eye cushions.
- Size: 71 W × 34 D × 33 H
- Seat Size: 60 W × 21½ D
- Includes ropes, pulleys, and springs for easy hanging. See page 7 for hanging system diagrams.
- Easily adjust the seat angle or keep it locked in place by using the poly bracket.



BROOKLYN COLLECTION



Sofa console adds
12" to lounge
console width.

SOFA SWING W/CONSOLE

| **BRSSWC**

- Pictured in Dark Gray with Gateway Mist cushions.
- Size: 83 W × 34 D × 33 H
- Seat Size: 72 W × 21½ D
- Includes ropes, pulleys, and springs for easy hanging. See page 7 for hanging system diagrams.
- Easily adjust the seat angle or keep it locked in place by using the poly bracket.

SOFA SWING

| **BRSSW**

- Not pictured.
- Size: 83 W × 34 D × 33 H
- Seat Size: 72 W × 21½ D
- Includes ropes, pulleys, and springs for easy hanging. See page 7 for hanging system diagrams.
- Easily adjust the seat angle or keep it locked in place by using the poly bracket.

Available with optional arm cushions. See page 6 for more info.





HERITAGE COLLECTION

The traditional structure of this collection makes it an outdoor seating staple.

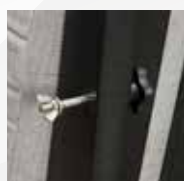
- 4" Cushions for ultimate comfort.
- Built to last with heavy duty design.
- Elegant arches and curves on each piece.
- Rounded armrests.
- Built with lasting heritage in mind.
- Seat and back cushions have straps to keep them secured to the frame, but also allow for simple removal.
- Swings feature rope and pulley system with exposed knots.
- For additional accessories, see page 57.

HERITAGE COLLECTION:
Sofa (HCS), Chairs (HCC), End Tables (HCET),
Conversation Table (HCCT): Tudor Brown
Cushions: Heather Beige
Pillows: Canvas Coal and Spectrum Indigo

HERITAGE COLLECTION

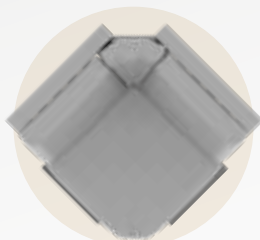


SECTIONAL



- Pictured in Black with Peyton Granite cushions.
- Shown with (1) LE Sectional Lounge, (1) Sectional Corner, and (1) RE Sectional Sofa.
- Comes standard with seat & back cushions. Pillows are optional.

This sectional is built for simple installation. Simply latch the ends together using the attached L-brace, then tighten a single hand bolt in the back to secure the two pieces together.



SECTIONAL CORNER | HCSCOR

- Size: 40 W × 40 D × 35 H
- Seat Size: 28 × 28



SECTIONAL CHAIR | HCSC

LE/RE CHAIR*

- Size: 28 W × 34 D × 35 H
- Seat Size: 22 × 24

EX CHAIR

- Size: 24 W × 34 D × 35 H
- Seat Size: 22 × 24



SECTIONAL LOUNGE | HCSL

LE/RE LOUNGE*

- Size: 52 W × 34 D × 35 H
- Seat Size: 22 × 48

EX LOUNGE

- Size: 48 W × 34 D × 35 H
- Seat Size: 22 × 48



SECTIONAL SOFA | HCSS

LE/RE SOFA*

- Size: 76 W × 34 D × 35 H
- Seat Size: 22 × 72

EX SOFA

- Size: 72 W × 34 D × 35 H
- Seat Size: 22 × 72



Arm Rest Location: LE = Left End | RE = Right End | EX = Extension (no arm rest) *LE Shown

HERITAGE COLLECTION



SWIVEL GLIDER | *HCSG*

- Pictured in Black with Harwood Crimson cushions.
- Size: 30 W × 34 D × 36 H
- Seat Size: 24 W × 24 D
- Standard with E&B heavy duty stainless steel swivel.

GLIDER | *HCCG*

- Pictured in Dark Gray with Peyton Granite cushions.
- Size: 30 W × 34 D × 36 H
- Seat Size: 24 W × 24 D

Available with optional arm cushions. See page 6 for more info.

HERITAGE COLLECTION



SOFA | HCS

- Pictured in Tudor Brown with Heather Beige cushions.
- Size: 81 W × 34 D × 35 H
- Seat Size: 72 W × 22 D
- Comes standard with (3) back cushions and (3) seat cushions.



HERITAGE COLLECTION



CHAIR | HCC

- Pictured in Black with Dolce Oasis cushions.
- Size: 33 W × 34 D × 35 H
- Seat Size: 24 W × 22 D
- Comes standard with (1) back cushion and (1) seat cushion.

LOUNGE | HCL

- Pictured in White with Canvas Coal cushions.
- Size: 57 W × 34 D × 35 H
- Seat Size: 48 W × 22 D
- Comes standard with (2) back cushions and (2) seat cushions.

Available with optional arm cushions. See page 6 for more info.

HERITAGE COLLECTION



SOFA SWING | HCSSW

- Pictured in Black with Heather Beige cushions.
- Size: 84 W × 34 D × 28 H
- Seat Size: 72 W × 22 D
- Comes standard with (3) back cushions and (3) seat cushions.
- Includes ropes, springs, and (2) pulley brackets for easy hanging. See page 7 for hanging system diagrams.
- Easily adjust the seat angle or keep it locked in place by using the poly bracket.

LOUNGE SWING | HCLSW

- Pictured in Brown with Harwood Crimson cushions.
- Size: 60 W × 34 D × 28 H
- Seat Size: 48 W × 22 D
- Comes standard with (2) back cushions and (2) seat cushions.
- Includes ropes, springs, and (2) pulley brackets for easy hanging. See page 7 for hanging system diagrams.
- Easily adjust the seat angle or keep it locked in place by using the poly bracket.

HERITAGE COLLECTION



CHAIR SWING | HCCSW

- Pictured in Black with Berenson Tuxedo cushions.
- Size: 36 W × 34 D × 28 H
- Seat Size: 24 W × 22 D
- Comes standard with (1) back cushion and (1) seat cushion.
- Includes ropes, springs, and (2) pulley brackets for easy hanging. See page 7 for hanging system diagrams.
- Easily adjust the seat angle or keep it locked in place by using the poly bracket.

DAYBED | HCDB

- Pictured in Black with Dolce Oasis cushions and optional back cushions.
- Size: 86 W × 48½ D × 28 H
- Seat Size: 74 W × 36 D (equivalent to Twin size bed)
- Includes ropes, springs and (4) brackets for easy hanging. See page 7 for hanging system diagrams.
- Comes standard with (3) seat cushions. Back cushions are optional (HCDBBC).

Available with optional arm cushions. See page 6 for more info.



A wooden pergola with a table and chairs in a garden setting. The pergola has a curved wooden frame and is surrounded by lush green trees. The table is made of wood and has a few items on it, including a glass and a bottle. The chairs are made of wood and have striped cushions. The ground is paved with light-colored stones.

BELLAIRE COLLECTION

Sleek, stylish, and comfortable, this collection draws the entire family to the table.

- Sleek, modern design with clean lines and plenty of eye appeal.
- Unmatched comfort.
- Curved back rest.
- **REFINED LIGHTER WEIGHT CHAIRS.**
- **LUMBAR SUPPORT CUSHIONS.**
- Easy-to-remove cushions.
- Wide variety of options.
- Chairs available with springs to create a smooth rocking action.

BELLAIRE COLLECTION:
44 x 72 Table Counter Height (BACT4472),
Swivel Counter Spring Chair (BACSSC):
Seashell on Coastal Gray
Cushions: Cove Pebble

BELLAIRE COLLECTION

Gather the family around a Bellaire table and chairs to create memories for a lifetime.



44 × 72 TABLE

DINING HEIGHT (30 H) | *BADT4472*

COUNTER HEIGHT (36 H) | *BACT4472*

BAR HEIGHT (42 H) | *BABT4472*

- Pictured in Counter Height (*BACT4472*).
- Poly: Dark Gray on Black.
- Top Size: 44 W × 72 L



44 × 44 TABLE

DINING HEIGHT (30 H) | *BADT4444*

COUNTER HEIGHT (36 H) | *BACT4444*

BAR HEIGHT (42 H) | *BABT4444*

- Pictured in Dining Height (*BADT4444*).
- Poly: Brown on Weatherwood.
- Top Size: 44 W × 44 L
- Pictured with optional slat top.



48 ROUND TABLE

DINING HEIGHT (30 H) | *BADT48R*

COUNTER HEIGHT (36 H) | *BACT48R*

BAR HEIGHT (42 H) | *BABT48R*

- Pictured in Bar Height (*BABT48R*).
- Poly: Seashell on Brown.
- Top Size: 48 Round
- Not available with border.

Notes:

- Table tops may be slightly undersized, up to 1".
- Tables come standard with umbrella holes and holder.

- Bordered top is standard on square/rectangle tables.
No charge for optional slat top.

BELLAIRE COLLECTION



SWIVEL BAR CHAIR

SPRING CHAIR | BABSSC CHAIR | BABSC

- Pictured in Swivel Spring Chair (BABSSC).
- Poly: Seashell on Coastal Gray. Fabric: Cove Pebble.
- Size: 25 W × 25 D × 44 H
- Seat Size: 20 W × 19 D



SWIVEL COUNTER CHAIR

SPRING CHAIR | BACSSC CHAIR | BACSC

- Pictured in Swivel Spring Chair (BACSSC).
- Poly: Seashell on Coastal Gray. Fabric: Cove Pebble.
- Size: 25 W × 25 D × 38 H
- Seat Size: 20 W × 19 D



SWIVEL DINING CHAIR

SPRING CHAIR | BADSSC CHAIR | BADSC

- Pictured in Swivel Spring Chair (BADSSC).
- Poly: Coastal Gray. Fabric: Cove Pebble.
- Size: 25 W × 25 D × 32 H
- Seat Size: 20 W × 19 D



CAPTAIN'S CHAIR | BADCC

- Poly: Dark Gray. Fabric: Peyton Granite.
- Size: 25 W × 25 D × 32 H
- Seat Size: 20 W × 19 D
- Only available in Dining Height.



DINING CHAIR | BADC

- Poly: Dark Gray. Fabric: Peyton Granite.
- Size: 18 W × 25 D × 32 H
- Seat Size: 20 W × 19 D
- Only available in Dining Height.





BENEVA COLLECTION

- Sleek, simple design with clean lines and plenty of eye appeal.
- Durable comfort.
- Plentiful storage.
- Easy-to-remove cushions.
- Wide variety of options.

BENEVA COLLECTION:

Island Bar (BEBT3360):

Seashell on Brazilian Walnut

Island Bar Stools (BEBS):

Brazilian Walnut Poly with Birds Eye Fabric

BENEVA COLLECTION

Make entertaining your guests effortless with an outdoor bar.



Note:

- Optional umbrella hole (BEUHU) is located in the center, 12" from the front edge. Pole is just inside the front panel for minimal interference. Compatible with all standard umbrellas, including those with crank mechanisms.

ELITE ISLAND BAR | BEEB3972C

- Pictured in Weathered Wood on Black and standard border on top.
- Size: 72 W × 39 D × 42 H
- Footprint: 51 W × 25 D
- Store patio items at your fingertips with these unique slideouts and drawers. Blum undermount drawer slides are standard.

ELITE ISLAND BAR OPEN | BEEB3972O

- Not pictured.
- Size: 72 W × 39 D × 42 H
- Footprint: 51 W × 25 D
- Same interior layout as Island Bar (BEBT3360)

BENEVA COLLECTION



ISLAND BAR | *BEBT3360*

- Pictured in Antique Mahogany.
- Size: 60 W × 33 D × 42 H
- Footprint: 40 W × 20 D
- Available with optional umbrella hole (BEUHU).
See page 48 for location details.



SWIVEL BAR STOOL | *BEBS*

- Pictured in Antique Mahogany.
- Fabric: Cove Pebble.
- Size: 16 W × 16 D × 32 H (sized for bar height seating)
- Seat Size: 16 W × 14 D



A black metal pergola frame stands on a wooden deck. To the left, a white daybed with a black cushion and a red and white striped pillow is visible. A hammock is strung between a tree and the pergola frame. The background features a wooden fence and green foliage.

FRAME SYSTEMS

Sturdy and durable, these frames will stand the test of time while adding beauty to your home.

- Durable powdercoated finish.
- Swing frames and pergolas are built with aluminum for an easy to move, yet strong structure.
- Aluminum option = rust free for a lifetime.
- Easy to assemble.
- Available with three color options.
- Wide variety of sizes and options available.

HERITAGE COLLECTION:
Daybed (HCDB): White
Cushions: Peyton Granite
Pillows: Harwood Crimson

FRAME SYSTEMS



ALUMINUM FRAME & TOP
Lightweight and minimal assembly

Pergola: Textured Copper
Swing: Heritage Sofa Swing in
Antique Mahogany (HCSSW)
Cushions: Canvas Fern
18 × 18 Pillows: Peyton Granite
14 × 14 Pillows: Canvas Camel

ALUMINUM PERGOLA | HSAP

- Powder coated all aluminum frame and top, including slats.
- 4" × 4" Square Aluminum Tubing.
- 132 W × 72 D × 100 H
- Daybed option has brackets configured to fit Heritage Collection Daybed or London Collection Daybed.
- Swing option includes for Sofa, Lounge, or Chair Swings.
- Daybed/Swing option includes both configurations.
- Minimal assembly required.
- Includes anchor down system.

POWDER COATED COLORS

BLACK

TEXTURED COPPER

GREY HAMMER

FRAME SYSTEMS



Pergola: Black
Curtains: Sunbrella Bliss Sand

SUNBRELLA CURTAINS | *SUNCUR*

- Sunbrella fabric with Stainless Steel Grommets.
- 52 W × 90 L
- Available in any Sunbrella fabric (see upcharge sheet for fabrics not listed in current catalog).

CURTAIN KIT FOR 12 × 12 PERGOLA | *HSAP-CK*

- Includes corner mounting brackets and cut-to-length plastic coated stainless steel wire cable with turnbuckle.
- Required for curtain installation on any pergola.

ALUMINUM FRAME & TOP Lightweight and minimal assembly

12 × 12 PERGOLA | *HSAP-12*

- Powder coated all aluminum frame and 2-piece top, including slats.
- 4" × 4" Square Aluminum Tubing.
- 144 W × 144 D × 100 H
- Minimal assembly required.
- Includes anchor down system.
- Available with (1) beam for swings (HSAP-12SB) or (2) beams for daybeds (HSAP-12DB)
- Custom sizes available. Use HSAP-C and specify dimensions when ordering or quoting.

FRAME SYSTEMS



Frame: Black Aluminum Swing Frame with optional Black Swing Frame Top
Swing: Brooklyn Lounge Swing w/Console in Dark Gray (BR5LSWC)
Cushions: Peyton Granite



Aluminum Swing Frame (HSASF)

ALUMINUM SWING FRAME | HSASF

- Powder coated welded aluminum frame for swings.
- Also available in Steel (HSSSF).
- Sofa/2-Chair Size: 108 W × 60 D × 90 H
- Lounge Size: 96 W × 60 D × 90 H
- 4" × 4" square aluminum tubing.
- Adjustable hanging brackets.
- Minimal assembly required.
- Includes anchor down system.

SWING FRAME TOP | HSSFT

- Powder coated welded aluminum frame.
- Easily adjusts with four preset angles.
- Poly and Sunbrella canvas top, closely matched to frame color.
- Sofa/2-Chair Size: 115 W × 72 D × 7 H
- Lounge Size: 103 W × 72 D × 7 H
- Minimal assembly required.

FRAME SYSTEMS



A-FRAME | *HSAF*

- Powder coated welded steel frame for swings.
- 1¾" Steel Pipe.
- Sofa/2-Chair Size: 104 W × 80 D × 84 H
- Lounge Size: 92 W × 80 D × 84 H
- Brackets configured to match chair setup.
- Minimal assembly required.

Swings: Heritage Chair Swing in Black (HCCSW)

Cushions: Astoria Sunset

ACCESSORIES



FIXED CUPHOLDER | *FCH*



TRAY/CUPHOLDER | *TCH*

- Great for laptops or outdoor eating.
- Available on all lines, but is customized for best fit per line.
- Easily switch between tray and cupholder. Base mounts directly to furniture, with storage for unused piece.
- Not compatible with swings.

LONDON OCCASIONALS



OTTOMAN | *LOOT*

- Shown in White with Spectrum Indigo cushions.
- Size: 24 W × 24 D × 17 H

COFFEE TABLE | *LOCFT*

- Pictured in Black
- 47 W × 22 D × 16 H

END TABLE

| *LOET*

- Pictured in Black
- 16 W × 16 D × 23 H

CONVERSATION

TABLE | *LOCT*

- Pictured in Black
- 35½ W × 32 D × 16 H

BROOKLYN OCCASIONALS



OTTOMAN | *BROT*

- Pictured in Brazilian Walnut with Milano Char cushions.
- Size: 24 W × 24 D × 17 H

COFFEE TABLE | *BRCFT*

- Pictured in Antique Mahogany.
- Size: 36 W × 22 D × 16 H

END TABLE

| *BRET*

- Pictured in Antique Mahogany.
- Size: 20 W × 20 D × 23 H

HERITAGE OCCASIONALS



OTTOMAN | HCOT

- Size: 24 W × 24 D × 17 H
- Shown in Black with Harwood Crimson cushions.

COFFEE TABLE | HCCFT

- Pictured in Dark Gray.
- 47 W × 22 D × 16 H

END TABLE | HCET

- Pictured in Dark Gray.
- 16 W × 16 D × 23 H

CONVERSATION TABLE | HCCT

- Pictured in Dark Gray.
- 35½ W × 32 D × 16 H

VIENNA OCCASIONALS



ANTIQUE MAHOGANY
ON BLACK*



LIGHT GRAY
ON BLACK*

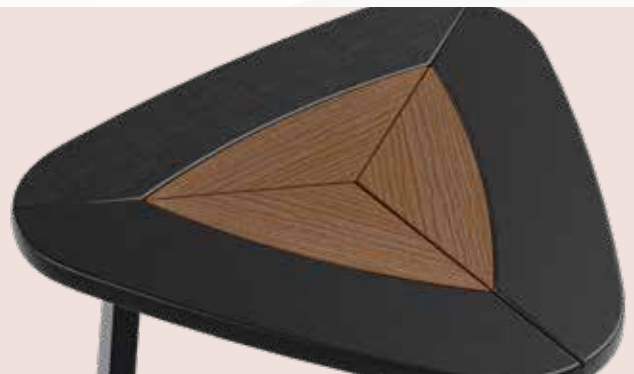


WEATHERED WOOD
ON BLACK*



WEATHERED WOOD
ON BROWN*

End table inset detail.



END TABLE | VEET

- 22 W × 21 D × 24½ H
- *Stock colors for Vienna Swivel Glider (VESG) (Shown on page 12) and Vienna End Table (VEET). Available for immediate shipment (restrictions apply).

PLANTERS & BENCHES

Add style to your patio with our outdoor planters.



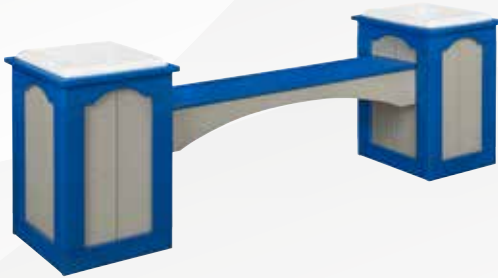
L-SHAPED CLASSIC PLANTER BENCH | LPB5

- Base: Light Gray
- Trim: Black
- Size: 78 W × 78 D × 24 H



CLASSIC PLANTER | PL

- Base: Light Gray
- Trim: Black
- 16 W × 16 D × 24 H



4' CLASSIC PLANTER BENCH | PB4

- Base: Light Gray
- Trim: Blue
- Size: 78 W × 16 D × 24 H

POST PLANTER

- Base: Aruba Blue
- Trim: White
- 17 W × 17 D

18" HIGH | PPB18

24" HIGH | PPB24

30" HIGH | PPB30



BLACK OR WHITE INSERTS

Available for square planters.
Please specify when ordering.



3 BOX ANGLED PLANTER | APB303

- Base: Driftwood
- Trim: Black
- 48 W × 17 D × 30 H

ANGLED PLANTER

- Base: Cherrywood
- Trim: Black
- 17 W × 17 D (1 Box)
- 30 W × 17 D (2 Box)
- 48 W × 17 D (3 Box)

1 BOX, 20" HIGH | APB201

1 BOX, 30" HIGH | APB301

2 BOX, 20" HIGH | APB202

2 BOX, 30" HIGH | APB302

3 BOX, 20" HIGH | APB203

3 BOX, 30" HIGH | APB303



FLOWER CARTS & WHEELBARROWS

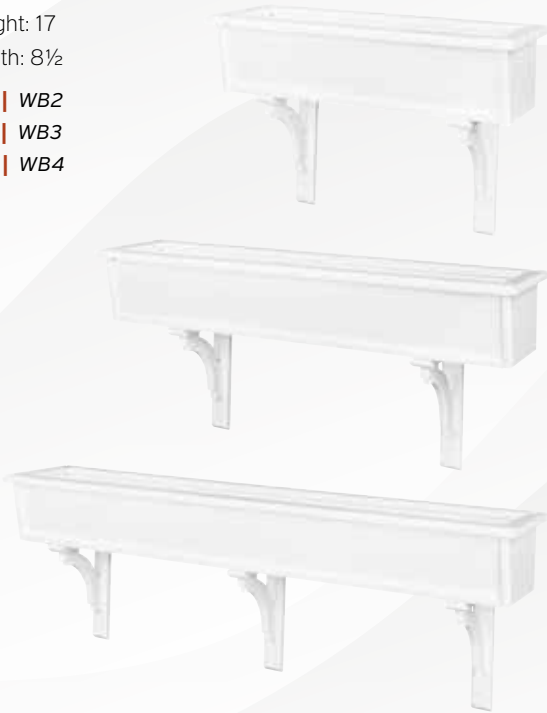
WINDOW BOXES

- Base: White
- Box Height: 6½"
- Overall Height: 17"
- Overall Depth: 8½"

24" WIDE | WB2

36" WIDE | WB3

48" WIDE | WB4



SMALL WHEELBARROW | SW8

- Base: Red
- Trim: White
- 11 W × 14 L × 12 H
- 6½" wheel



MEDIUM WHEELBARROW | MW7

- Base: Bright Orange
- Trim: White
- 13 W × 15 L × 17 H
- 10" wheel



LARGE WHEELBARROW | LW6

- Base: Lemon Yellow
- Trim: Brown
- 22 W × 26 L × 29 H
- 16" wheel



These wheelbarrows & flower carts are perfect for filling with flowers & other plants to add a seasonal dimension to your yard or flower bed. And the tropical colored poly adds a pop of color all year round!

LARGE FLOWER CART | LF9

- Base: White
- Trim: Black
- 28 W × 54 L × 34 H
- 24" wheels



SMALL FLOWER CART | SF11

- Base: Tropical Lime Green
- Trim: Black
- 17 W × 24 L × 17 H
- 10" wheels



MEDIUM FLOWER CART | MF10

- Base/Trim: Bright Purple
- 22½ W × 36 L × 24 H
- 15½" wheels



POLY COLORS

STANDARD COLORS



BLACK



TUDOR BROWN



CEDAR



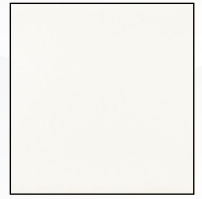
WEATHERED WOOD



CHERRYWOOD



CARDINAL RED



BRIGHT WHITE



TURF GREEN



MINT



PATRIOT BLUE



BLUE



DARK GRAY



LIGHT GRAY

BRIGHT COLORS (additional upcharges apply)



PINK



BRIGHT ORANGE



LEMON YELLOW



TROPICAL
LIME GREEN



ARUBA BLUE



POWDER BLUE



BRIGHT PURPLE

WOODGRAIN COLORS (additional upcharges apply)



SEASHELL



BIRCHWOOD



DRIFTWOOD GRAY



COASTAL GRAY



NATURAL TEAK



ANTIQUE
MAHOGANY



BRAZILIAN
WALNUT

VIENNA STOCK COLORS*



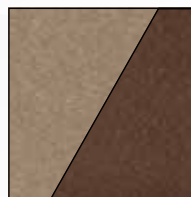
ANTIQUE
MAHOGANY
ON BLACK



LIGHT GRAY
ON BLACK



WEATHERED WOOD
ON BLACK



WEATHERED WOOD
ON BROWN

*Stock colors for Vienna Swivel Glider (VESG) and Vienna End Table (VEET). Available for immediate shipment (restrictions apply).

FABRIC COLORS

FABRIC SELECTIONS



PEYTON GRANITE



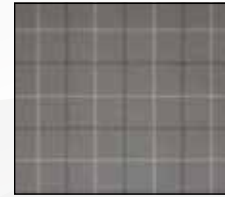
CANVAS COAL



CANVAS GRANITE



CABANA CLASSIC



PARADIGM STONE



BERENSON TUXEDO



MILANO CHAR



CANVAS JAVA



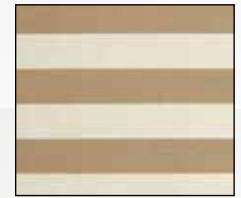
STANTON GREYSTONE



COVE PEBBLE



REMIX MUSHROOM



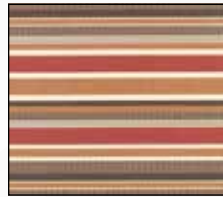
HEATHER BEIGE



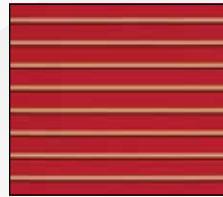
BLISS SAND



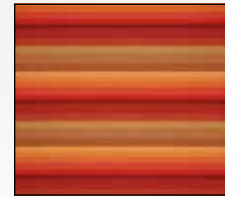
CANVAS BIRDS EYE



BRANNON REDWOOD



HARWOOD CRIMSON



ASTORIA SUNSET



CANVAS BUTTERCUP



CANVAS FERN



CANVAS ARUBA



DOLCE OASIS



GATEWAY MIST



SPECTRUM INDIGO

Additional Sunbrella Fabric colors available at www.sunbrella.com. Upcharges apply.



FABRIC MAINTENANCE

We recommend the Clean and Restore products from Sunbrella to keep your fabrics in great condition.

CLEAN | CLEAN
RESTORE | RESTORE

• Available in 16 fl. oz. bottles.

FURNITURE COVERS

- Custom sewn to fit your furniture.
- Helps keep furniture clean and dry.
- Made with black marine-grade waterproof canvas (5 year warranty).

BROOKLYN

SOFA SWING | BRSSW-DC
5' LOUNGE SWING | BR5LSWC-DC
LOUNGE SWING | BRLSW-DC
CHAIR SWING | BRCSW-DC
SOFA | BRS-DC
5' LOUNGE | BR5LC-DC
LOUNGE | BRL-DC
CHAIR | BRC-DC
ROCKING CHAIR | BRRC-DC
5' LOUNGE GLIDER | BR5LGC-DC
LOUNGE GLIDER | BRLG-DC
SWIVEL GLIDER | BRSG-DC
CHAIR GLIDER | BRCG-DC
OTTOMAN | BROT-DC

BELLAIRE

SWIVEL DINING CHAIR | BASDC-DC
(fits any swivel chair)
DINING CHAIR | BADC-DC
DINING CAPTAIN CHAIR | BADCC-DC

HERITAGE

DAYBED | HCDB-DC
SOFA SWING | HCSSW-DC
LOUNGE SWING | HCLSW-DC
CHAIR SWING | HCCSW-DC
SOFA | HCS-DC
LOUNGE | HCL-DC
CHAIR | HCC-DC
CHAIR GLIDER | HCCG-DC
SWIVEL GLIDER | HCSG-DC
OTTOMAN | HCOT-DC

BENEVA

BAR STOOL | BEBS-DC

LONDON

DAYBED | LODB-DC
SOFA SWING | LOSSW-DC
LOUNGE SWING | LOLSW-DC
CHAIR SWING | LOCSW-DC
SOFA | LOS-DC
LOUNGE | LOL-DC
CHAIR | LOC-DC
CHAIR GLIDER | LOCG-DC
SWIVEL GLIDER | LOSG-DC
OTTOMAN | LOOT-DC

VIENNA

5' LOUNGE GLIDER | VE5LGC-DC
LOUNGE GLIDER | VELG-DC
SWIVEL GLIDER | VESG-DC
CHAIR GLIDER | VECG-DC
CHAIR | VEC-DC



WARRANTY & CLEANING

WARRANTY COVERAGE

FURNITURE:

- 20 Year Residential
- 5 Year Commercial

CUSHIONS:

- 5 Year Residential
- 2 Year Commercial

STEEL SWING FRAMES:

- 3 Year Residential
- 1 Year Commercial

ALUMINUM SWING FRAMES:

- 5 Year Residential
- 2 Year Commercial

PLANTER INSERTS:

- 1 Year Residential

WHEELBARROWS & FLOWER CARTS:

- 1 Year Residential



WARRANTY:

Heritage Poly, LLC, DBA PatioKraft ("PatioKraft") warrants, to the original purchaser, that its poly furniture will be free of defects in workmanship and materials for a period of twenty years for residential use and five years for commercial use, effective from the original purchase date. At its option, PatioKraft will repair or replace this project without charge for parts and labor, providing our inspection indicates that an original defect exists. If we choose to replace the product and the exact product is no longer available at the time of warranty service, a substitution of a similar piece in value and function may be made.

Polyethylene is a synthetic product and may scratch, fade when exposed to sunlight, or stain when exposed to other substances, all of which are not covered under this warranty. This warranty does not cover scratching, chipping, denting, or other surface damage due to normal wear or abuse. Some expansion and contraction due to extreme temperature or humidity cycles is normal and not considered a material or manufacturing defect and is not covered by this warranty.

Stainless steel fasteners are warranted to not fail structurally for the life of the warranty period. Stainless steel swivels and glider arms are warranted for two years. E&B stainless steel swivels are warranted for 20 years. Stainless steel hardware is warranted against corrosion. Powdercoated or zinc plated hardware is not warranted against corrosion. Stainless steel hardware is not warranted in coastal areas, near saltwater pools, or other environments with highly corrosive atmospheres. Chipping of powdercoating or paint is not covered by warranty.

Aluminum frame systems are warranted for 3 years residential or 1 year commercial in coastal areas near saltwater pools, or other environments with highly corrosive atmospheres. Chipping of powdercoating or paint is not covered by warranty.

PatioKraft makes no warranties other than those specifically described herein. This warranty covers only the merchandise itself. PatioKraft assumes no liability for personal injury or property damage as it relates to any malfunction or defect. This warranty does not cover damage due to unauthorized service or repair, normal wear and tear, abuse, misuse, or use of the product in manner other than its intended use. Alteration of the product voids its warranty. Sales by anyone other than an authorized dealer voids this warranty entirely.

To file a warranty claim, contact PatioKraft. Mailing address: 2380 N 925 W, Shipshewana, IN 46565. Phone: (260) 768-7359 or Fax: (260) 365-8444. You may also contact your local dealer.

As defined by federal law, this is a limited warranty.

CLEANING:

Our poly furniture is made from High Density Polyethylene (HDPE), and is extremely durable and resistant to most corrosive substances, chemicals, and solvents. It will not rot, splinter or be damaged by wood boring insects and does not promote bacterial growth. It contains UV inhibitors to resist fading and will never need to be painted or stained.

Although our furniture is virtually maintenance free, some cleaning is necessary.

GENERAL FURNITURE CLEANING

- Scrub boards with a soap and water solution using a soft sponge or plastic-bristled brush.
- You can use a soft-bristled toothbrush to clean spaces that are hard to reach.
- To remove surface dust, just wash furniture with cold, clear water.

DEEP FURNITURE CLEANING

- A pressure washer may be used on the lightest setting to deep clean your furniture.
- It is not recommended to use more than 1,500 psi.
- Keep the tip of the pressure washer at least 10-12 inches away from the furniture so it does not damage the lumber.
- In areas where the furniture comes into contact with saltwater or saltwater mist (such as coastal areas), be sure to regularly rinse furniture with fresh water to minimize the potential for corrosion of the stainless steel hardware and maximize the life of the product.

CUSHION/PILLOW CLEANING

- We recommend using Sunbrella Clean/Restore products (page 61). If unavailable, use mild soap and water.
- Brooklyn, Heritage, and London Collection cushions and pillows have a zipper to remove the cover, which can then be machine washed.



Your Local Dealer:

Simon-Pure
720-230-2900
www.simonpureamish.com



PATIO FURNITURE:

Vienna Collection 5' Lounge Glider w/Console (VE5LGC), Swivel Gliders (VESG), End Tables (VEET):
Brazilian Walnut on Birchwood

Pillows: Berenson Tuxedo

DAYBED:

Pergola (HSAP1212): Black

Curtains (SUNCUR): Bliss Sand

London Daybed (LODB): Weathered Wood

Daybed Cushions: Canvas Coal